

Data Center Demand

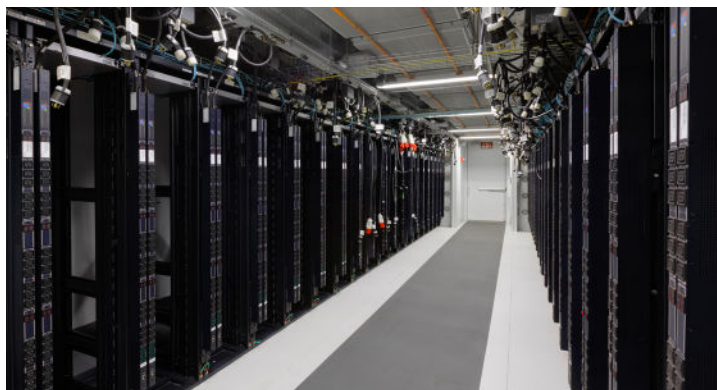
Surging Data Center demand in Phoenix amidst AI boom



JLL x DCX

Record high absorption and a surge in pre-leasing commitments amidst supply chain constraints has resulted in dwindling power availability in the Phoenix Data Center Market. Erupting advancements in AI and quantum computing are expected to further exasperate supply pressures.

George Slessman, industry expert and founder of DCX, is one of the few providers in position to meet demands for hyper-density power requirements, with up to 12 MW available at a newly-constructed, 6-acre Goodyear, Arizona campus. The site is eligible for the Arizona Computer Data Center tax incentive program and boasts move-in ready Class A office space and amenities, secure storage and loading dock.



Notable project features

Network

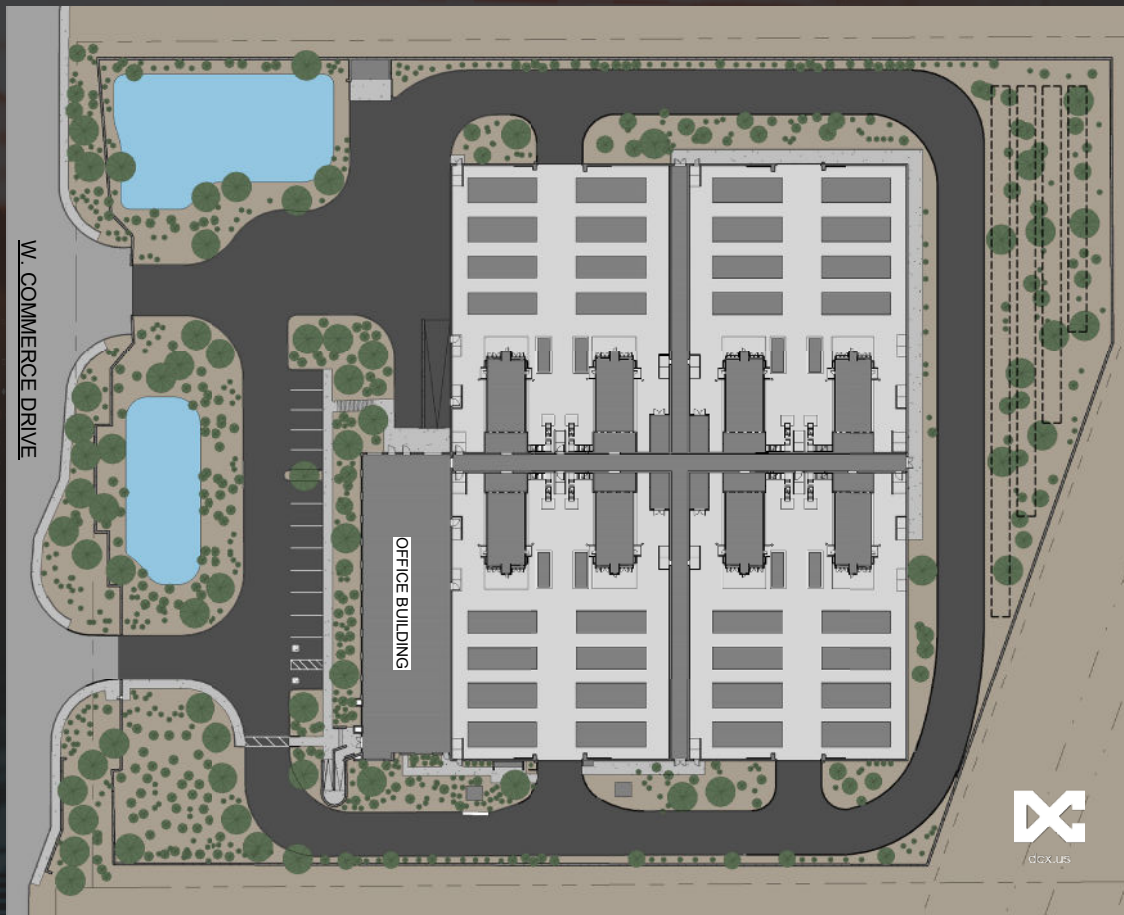
- Multiple points of entry (POEs) diversity for inbound network
- DCX operated CISCO powered multihomed internet service online
- No recurring cross connect fees
- Local fiber networks include - Cogent, Lumen/Centurylink Legacy, Cox, Lumen/Level 3 Long Haul, Zayo, Windstream, Telia, Hudson Fiber, Syringa Networks, Lumen/Level 3 Time Warner Telecom Legacy

Data Suites

- 100% dedicated critical system per data suite
- 700kW @ 2N per data suite
- Up to 30kW per rack
- 2 x 720kW dedicated UPS systems
- 2 x 1500kW Cummins diesel emergency generators
- Starline Busway & APC rack power distribution units installed
- Up to 44x24" wide 4 post rack per suite
- Arizona Computer Data Center tax incentive eligible
- Commissioning provided by TBL Mission Critical

Critical Systems

- 100% concurrently available
- Designed water utilization efficiency is zero (liters/kW/hrs.)
- 2N Design (UPS, generator and mechanical systems)
- 72 hours of fuel storage
- Each data suite contains 24 DX units
- Multiple cooling modes to optimize PUE
- Lighting protection system



Purpose built hyper density data center for HPC, AI/ML & Mission-Critical Applications

Meet the advisors



Mark Bauer

Senior Managing Director
+1 602 282 6259
mark.bauer@jll.com



Clark Bauer

Senior Associate
+1 602 282 6260
clark.bauer@jll.com



Ryan King

Director of Business
Development
+1 602 919 4400
ryan.king@dcx.us